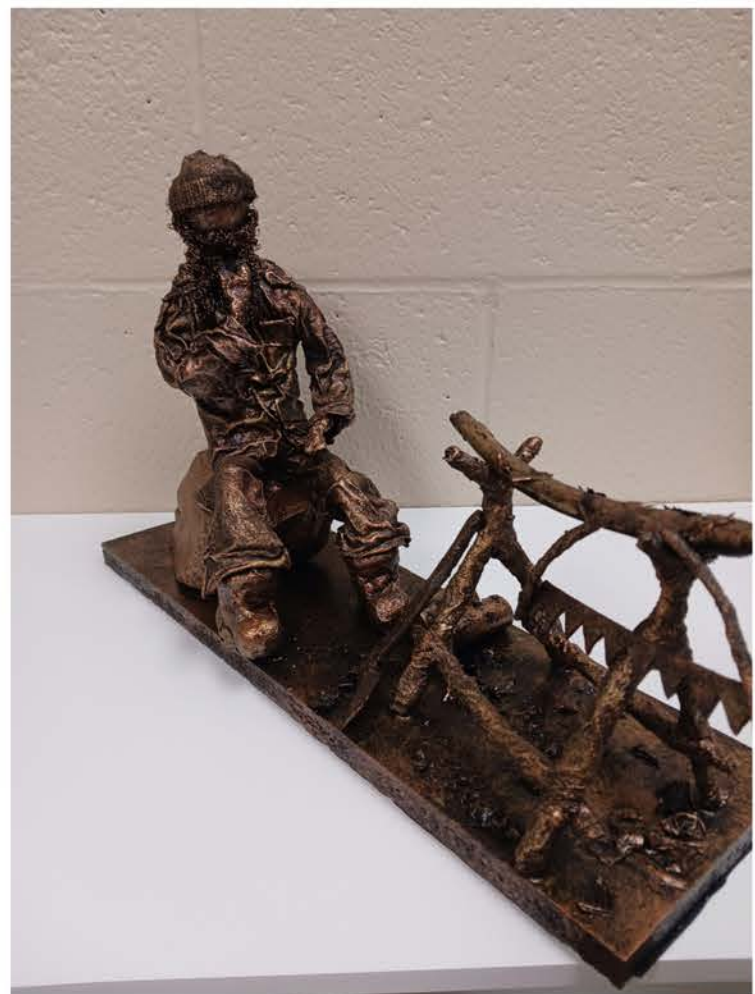


community
Art
Procurement
PROGRAM

2025
SUBMISSIONS



Resting Woodsman

Artist: Marilyn Lambert



ARTWORK BACKGROUND INFORMATION:

While thinking about what I was going to sculpture for the Community Art Procurement, the first thing that came to my mind was Boonie and his Christmas trees. Looking back at the history of Clarenville, there has been logging and tree cutting going on as long as the community existed. I then decided I would bring these ideas into my sculpture. whether it be cutting logs to build with, or cutting fire wood or Christmas trees, the history of tree cutting will continue in the community.



MEDIUM:

Paverpol sculptures are figures or objects that start as an idea in your mind and with some wire, tinfoil, fabric and paverpol product, your idea comes to life. Paverpol is a non-toxic water-based product that can be used with any natural material. It dries quickly and hardens overnight and is weather proof.

DIMENSIONS: Height: 11" Width: 5.5" Length: 17"

YEAR COMPLETED: 2025



Clarenville
REAL • LIFE • POTENTIAL

community
Art
Procurement
PROGRAM



Friendships Made

Artist: Marilyn Lambert



ARTWORK BACKGROUND INFORMATION:

This sculpture represents friendships made and the freedom of growing up in Clarendville. My son would jump on his bike with his fishing rod, meet up with his friend and spend hours at Dark Hole Brook trying to catch that prize fish.

Growing up in a community where this is possible is not a luxury to all children. I am grateful to have these memories of his youth and I'm happy to say that he still loves fishing to this day.



MEDIUM:

Paverpol sculptures are figures or objects that start as an idea in your mind and with some wire, tinfoil, fabric and paverpol product, your idea comes to life. Paverpol is a non-toxic water-based product that can be used with any natural material. It dries quickly and hardens overnight and is weather proof.

DIMENSIONS:

Height: 14" Width: 9" Length: 14"

YEAR COMPLETED:

2025



Clarendville
REAL • LIFE • POTENTIAL

community
Art
Procurement
PROGRAM

Hope Springs Eternal

Artist: Rowena Avery

ARTWORK BACKGROUND INFORMATION:

In these turbulent times, nature reminds us of optimism, beauty and renewal.



MEDIUM:

Wool on Linen, hooked art.



DIMENSIONS:

Height: 29" Width: 24"

YEAR COMPLETED:

2025



Clareville
REAL • LIFE • POTENTIAL

community
Art
Procurement
PROGRAM



Reflection

Artist: Rusty Drover

DIMENSIONS: Height: 24"
Width: 48"
Depth: 1.5"

YEAR COMPLETED: 2025



ARTWORK BACKGROUND INFORMATION:

Reflecting back on the history of Clarenville's first fire truck - in service from 1961-1986. 1961 LaFrance Spartan Pumper retired from actual fire service, the truck was restored to its former glory in 2015. Today it is for special events and remains an important part of Clarenville's heritage. This pumper served Clarenville and surrounding areas.

MEDIUM:

Oil painting on stretched canvas - Inspired by photos I took October 28, 2024 sunsetting aglow at Elizabeth Swan Park. It was a dramatic scene with the clouds resembling fire and smoke reflecting into the windshield of the Pumper Truck. Aglow - a sense of warmth and drama to the scene.

Autumn's Here – New Beginnings

Artist: Shawn Taylor



ARTWORK BACKGROUND INFORMATION:

An overlooked canvas and some dollar store crayons - once destined for the trash - are reborn in this mixed media work, "Autumn's Here - New Beginnings" autumnal palette weaves earth tones together like a rich fabric, echoing our region's fall changes where oranges and yellows burst forth.

With layers of wax evoking the satisfying crunch of leaves underfoot - this pollock inspired piece celebrates transformation, reinventing forgotten crayons into something new and different - a vivid expression of change and renewal.



MEDIUM:

I am a huge fan of "do what you can, where you are, with what you have". "Autumn's Here – New Beginnings" takes an overlooked canvas, once destined for the trash, and reinvents it into a mixed media celebration of transformation. Through layers of paint and melted wax, the piece unfolds like autumn itself - rich in earth tones with splashes of yellows and oranges - this work honours the art of reinvention, reminding us that what is cast aside can, over time, be reborn into something truly extraordinary.



Clareville
REAL • LIFE • POTENTIAL

Community
Art
Procurement
PROGRAM



Another Round

Artist: Jordan Santo



ARTWORK BACKGROUND INFORMATION:

Ralph "Boonie" Lethbridge was a beloved figure in Clarenville area, known for his charitable nature, trademark wit, bushy beard, and of course his Christmas trees. Boonie loved being an avid outdoorsman but it was his love for others that made him truly special.

This painting is a toast to Boonie's generosity, his community spirit, and the way he turned everyday moments into acts of kindness. Raise a glass for "Another Round" to celebrate a man who reminds us all of the power of how a single person has the ability to inspire and uplift an entire town.



MEDIUM:

Mixed Media, mostly acrylics - sealed with a matte finish.

DIMENSIONS:

Height: 24" Width: 18"

YEAR COMPLETED:

2025



Clarenville
REAL • LIFE • POTENTIAL

community
Art
Procurement
PROGRAM



Perfect Present

Artist: Alicia Barrett

DIMENSIONS: Height: 36"
Width: 24"

YEAR COMPLETED: 2022



Clareville
REAL • LIFE • POTENTIAL

community
Art
Procurement
PROGRAM

ARTWORK BACKGROUND INFORMATION:

Fun fact about puffins - they like to gather colorful items and bring them back to their mate at the burrow.



MEDIUM:

This piece was created by compositing three images together. The Puffin, a wider view of the cliff edge he was walking on, and finally the sunset sky. Printed on satin canvas.



Go Bous Go

Artist: Bonnie Goodyear



ARTWORK BACKGROUND INFORMATION:

Gazing up into two majestic birch trees, this hooked rug transports the viewer to Clarenville's serene beauty. Soft loops bring these two birches to life while celebrating the town's iconic trees that dot its landscape. The colorful leaves reflect Clarenville's natural beauty, as the local birch line the rivers, the streams and even the entrance to the town.



MEDIUM:

Designed and hooked by the artist using 100% wool specialty and wool fabric on linen. Many of the yarns are hand dyed, some by the artist. Frames are handmade by Kevin Goodyear.

DIMENSIONS:

Height: 35" Width: 17"

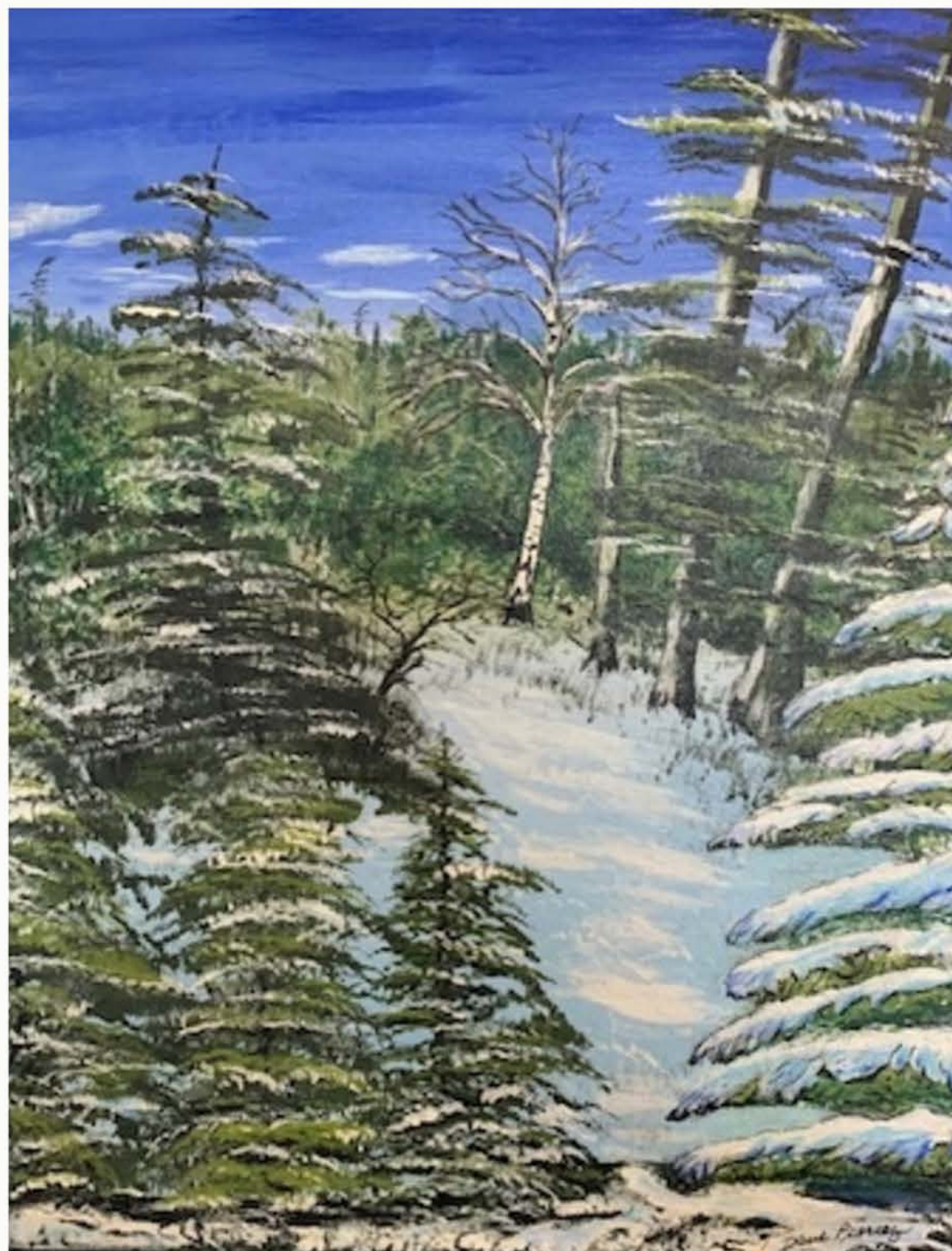
YEAR COMPLETED:

2025



Clarenville
REAL • LIFE • POTENTIAL

community
Art
Procurement
PROGRAM



A Small Clearing

Artist: David Piercey



ARTWORK BACKGROUND INFORMATION:

"Clarenville's Trails" is a ten-piece series I created to capture random scenes in time to celebrate our beautiful landscape, in the spirit of "the groups of seven" (Canadian artists in the early 1900's). These artists inspired me with their shared mission to capture the character of the Canadian landscape, fostering a sense of National identity.

This is the first picture in the series. The picture was photographed on the 16th of February 2025, on the Rotary Trail, Loop 1, Clarenville, NL



MEDIUM:

Painted with traditional brushes (ie. liner & fan) on stretched canvas using acrylic paint, incorporating bright colors and water-based finish.

DIMENSIONS: Height: 16" Width: 12"



Clarenville
REAL • LIFE • POTENTIAL

community
Art
Procurement
PROGRAM

White Hills

Artist: Michelle Dooley-Kirby



ARTWORK BACKGROUND INFORMATION:

Nature at its finest: the beauty of White Hills and the winter wonderland which humans saw so much potential in, with hard work, financial commitments and planning: the dream of having top class skiing facility on the hills but also in the uniquely designed buildings which make “White Hills” a popular spot to stay and play. My hopes for this watercolor piece was to capture the natural elements of the landscape but also the unique designs of the buildings and the ski equipment. Nature vs man; function vs play; facing the elements vs comfort and safety.



MEDIUM:

The White Hills watercolor piece was painted on a 140lb high grade watercolor paper. Using all professional grade watercolor paints, pens & ink pencils, and protected with a cold wax product. All products used are professional grade and archival. The piece is professionally framed, has a professionally cut matte, and ready to hang with a protective dust covering over the back.

DIMENSIONS:

Height: 12.5" Width: 15.5" Depth: 0.75"

YEAR COMPLETED: 2025



Lifestyles

Artist: Michelle Dooley-Kirby



ARTWORK BACKGROUND INFORMATION:

Choosing the softness of the watercolor and the movement of the brushstrokes, and the various colors of the houses and sheds, helped to represent the sense of a little bit of the fishing/outport community which is located in a modern town, with wonderful modern amenities. Living the best life: the old, and the new “Lifestyles in a lovely town”.



MEDIUM:

The painting was inspired by a photo shared by a friend, who often travels to Clarenville. I felt that using watercolor vs acrylic would help to give the piece a softer effect, and using archival pens to give the piece the more crisp lines and details. The focus is the cluster of buildings, nestled in nature. The painting is double matted and framed in a professional metal frame.

DIMENSIONS:

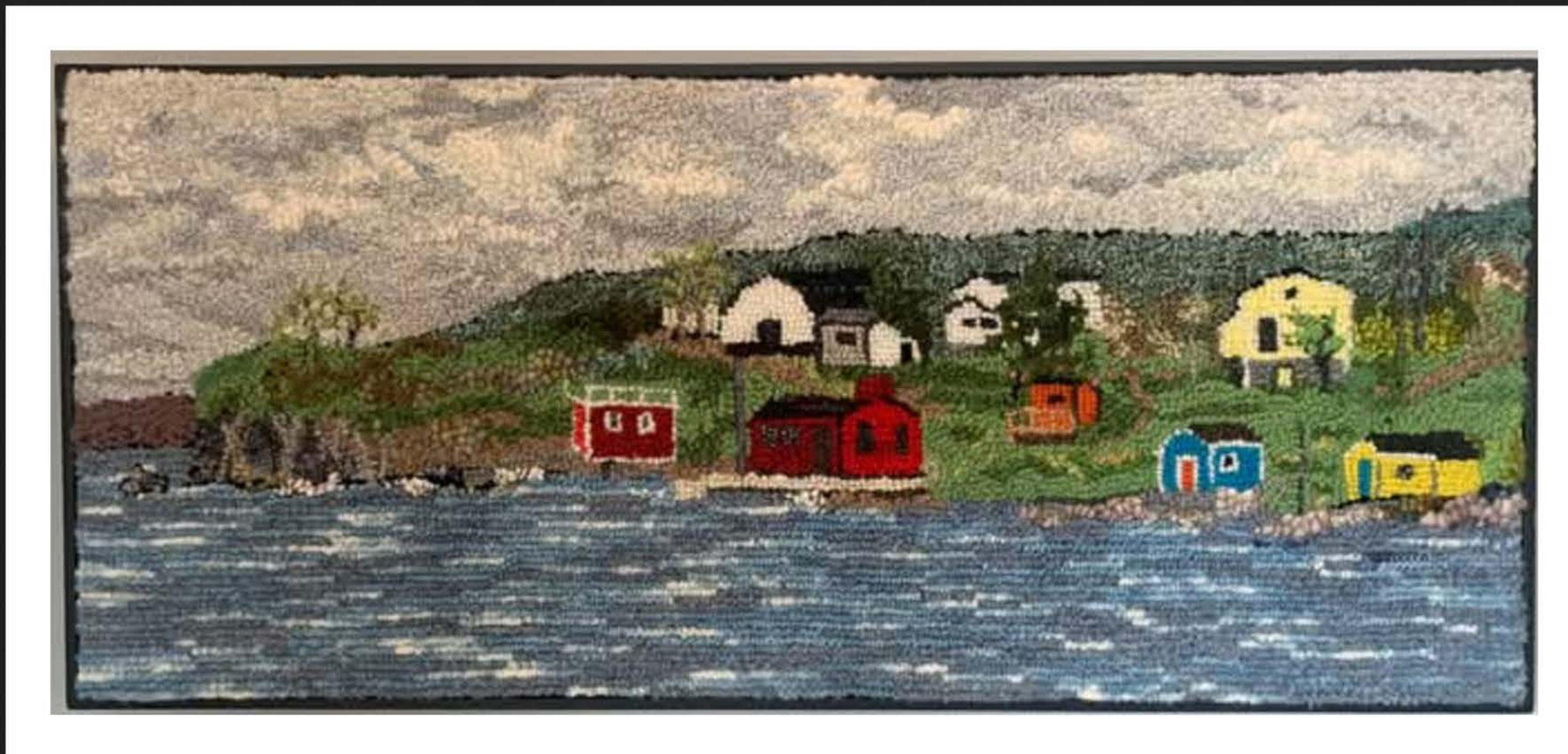
Height: 11.5" Width: 15.5" Depth: 1"

YEAR COMPLETED: 2025



Clarenville
REAL • LIFE • POTENTIAL

community
Art
Procurement
PROGRAM



Strong's Point

Artist: Rowena Avery

DIMENSIONS: Height: 14"
Width: 32"

YEAR COMPLETED: 2025



Clareville
REAL • LIFE • POTENTIAL

community
Art
Procurement
PROGRAM

ARTWORK BACKGROUND INFORMATION:

Connecting both residents and visitors to all the water has to offer, Strong's Point remains a gathering spot for those seeking a day on the bay, or just a glimpse of a very picturesque and beloved Clareville landmark.

MEDIUM:

Wool on linen, hooked art.



A Kiss for Papa

Artist: Alicia Barrett



ARTWORK BACKGROUND INFORMATION:

A tender moment shared between two foxes among the gorgeous wildflowers of Newfoundland.



MEDIUM:

Printed on Satin Canvas.

DIMENSIONS:

Height: 36" Width: 24"

YEAR COMPLETED:

2021



Clareville
REAL • LIFE • POTENTIAL

community
Art
Procurement
PROGRAM

After the Rain

Artist: David Piercey

ARTWORK BACKGROUND INFORMATION:

This painting is the 3rd in the "Clarenville Trails" series. The photo that was used for the painting was taken on February 27, 2025, on the Shoal Harbour river. The ice and snow that covered the river the day before was all afloat down stream.

MEDIUM:

Acrylic paint was used on stretched canvas and using water based sealer and finish.

DIMENSIONS: Height: 16" Width: 12"



Clarenville
REAL • LIFE • POTENTIAL

community
Art
Procurement
PROGRAM

Nature's Mosaic

Artist: Una Healey



ARTWORK BACKGROUND INFORMATION:

This piece was inspired by the beauty of things that change over time. The cracked texture reminds me of dried earth or old tree bark, natural patterns that tell a story of growth and weathering. I used war, earthy tones to give it a grounded feel, and the hint of glitter adds a little sparkle, like sunlight catching on rough stone. It's a reminder that even things that seem worn or broken can have their own unique beauty.



MEDIUM:

This mixed media piece was created using modeling paste and crackle medium to achieve its textured, cracked surface. Acrylic paints in earthy tones were layered to enhance the organic effect, with glitter accents adding subtle sparkle and depth.

DIMENSIONS:

Height: 12" Width: 12"

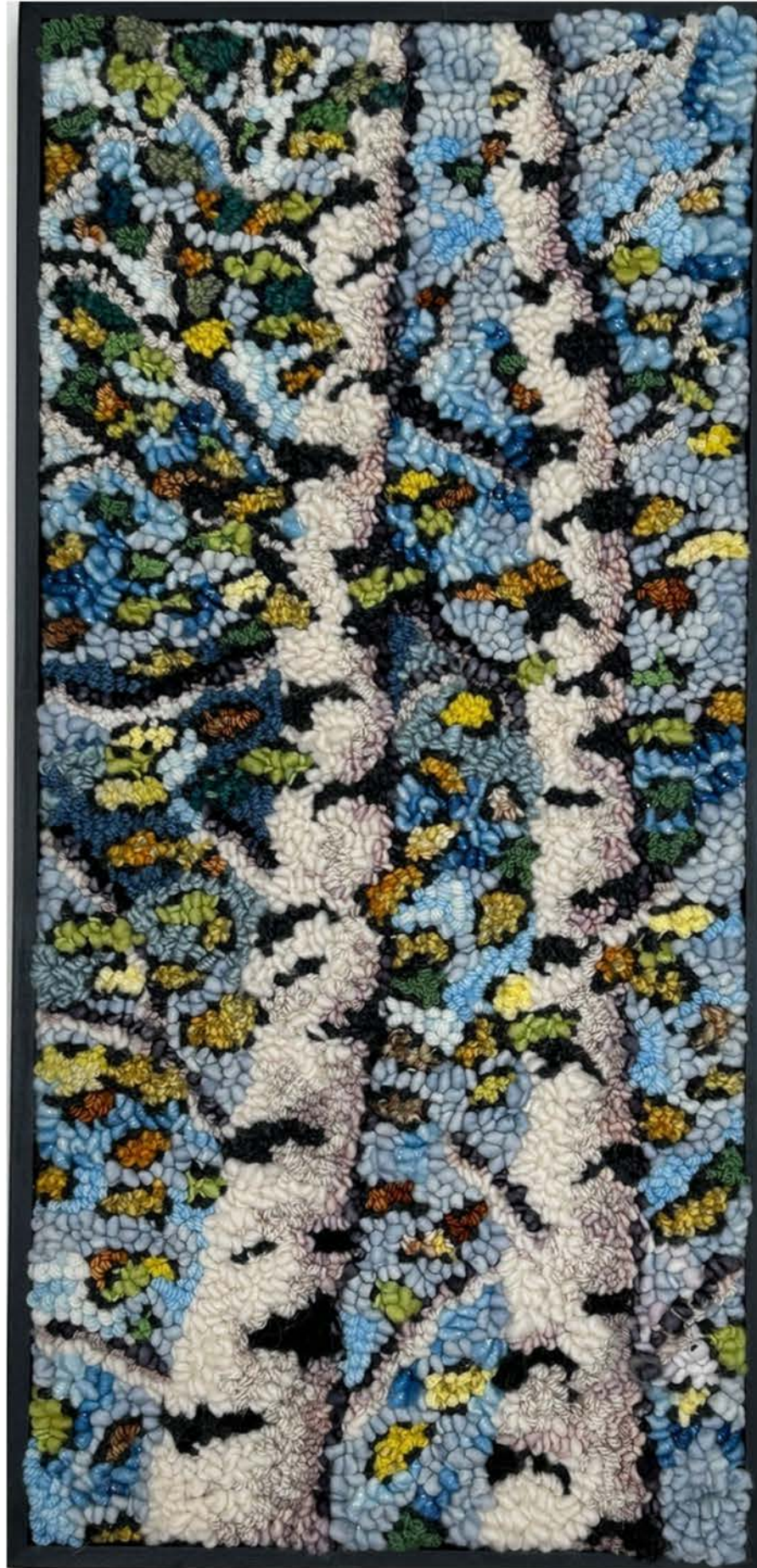
YEAR COMPLETED:

2025



Clarenville
REAL • LIFE • POTENTIAL

community
Art
Procurement
PROGRAM



Birches of Clarenville

Artist: Bonnie Goodyear



ARTWORK BACKGROUND INFORMATION:

Gazing up into two majestic birch trees, this hooked rug transports the viewer to Clarenville's serene beauty. Soft loops bring these two birches to life while celebrating the town's iconic trees that dot its landscape. The colorful leaves reflect Clarenville's natural beauty, as the local birch line the rivers, the streams and even the entrance to the town.



MEDIUM:

Designed and hooked using 100% wool specialty yarns and wool fabrics on linen. Many of the yarns are hand dyed, some by the artist. Frames are handmade by Kevin Goodyear.

DIMENSIONS:

Height: 25" Width: 12"

YEAR COMPLETED:

2025



Clarenville
REAL • LIFE • POTENTIAL

community
Art
Procurement
PROGRAM

Ron Tilley's Old House

Artist: Bonnie Lethbridge



ARTWORK BACKGROUND INFORMATION:

This old house stood at the beginning of Tilley's Road for many years. If you lived in Clarenville prior to the late 1980's, you might remember it and especially the gentleman who lived here. Ron Tilley was known for being kind-hearted, having a very sharp mind and a great love for stray cats and a sociable drink.



MEDIUM:

A Hooked Rug piece, using various wool yarns on a linen backing. Framed with reclaimed wood.

DIMENSIONS:

Height: 28.5" Width: 33"

YEAR COMPLETED:

2025





Fighter of the Flames

Artist: Alicia Barrett

DIMENSIONS: Height: 30"
Width: 45"

YEAR COMPLETED: 2004



Clareville
REAL • LIFE • POTENTIAL

community
Art
Procurement
PROGRAM



ARTWORK BACKGROUND INFORMATION:

A portrait of a volunteer fire fighter. I wanted this piece to portray a fire fighter walking out of the flames.



MEDIUM:

The final product is printed on satin canvas. In creation a fog machine was used to create smoke. Colored red and orange gels were used on lights to give the illusion of fire colors.

About The Gallery

The creation of The Gallery is the result of a collaborative partnership between the Clarendville Regional Arts Association (CRAA) and the Town of Clarendville.

This vibrant new arts venue will showcase a variety of works by local and regional artists, providing a platform for creative expression and cultural exchange. The Gallery aims to serve as a hub for the community, bringing together artists, art lovers, and visitors to celebrate the rich cultural heritage of the area.

