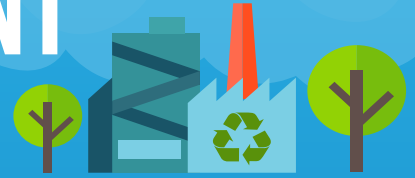
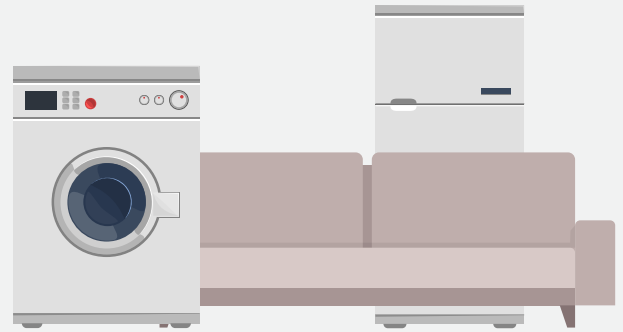


# WASTE MANAGEMENT GUIDELINES



## BULK ITEM PICK-UP GUIDELINES

The Town of Clarendville provides curbside bulk item pickup services on assigned bulk item pick-up days throughout the year. Please review the items accepted and not accepted. Your scheduled bulk pick up day(s) throughout the year can be found on your yearly Waste Collection Schedule.



### Bulk Pick-up Items **ACCEPTED**

- Sofas, tables, chairs & furniture
- Children's toys
- Desks & bookshelves
- Fridges, stoves, washers, dryers & additional household appliances
- Box springs & mattresses
- Dressers & bathroom fixtures
- Carpet & flooring tied in rolls less than 1.5m (4ft), less than 22kg (50lbs)
- Doors, window boxes - glass must be removed
- Tree limbs tied in bundles less than 1.5m (4ft), less than 22kg (50lbs)
- Glass, securely placed in picture proof packaging & marked as **BROKEN GLASS**
- Iron & removable car parts less than 22kg (50lbs); all fluids such as oil, lubricants & antifreezes must be removed by resident prior to collection
- Other bulk items normally associated with a household

**SCATTERED OR LOOSE ITEMS WILL NOT BE COLLECTED**



### Bulk Pick-up Items **NOT ACCEPTED**

Microwaves, Electronics (TVs, computers, cell phones) | Shingles & construction materials | Vehicle parts greater than 22kg or 50lbs | Tires | Fish nets | Car wrecks, car chassis & frame | Animal carcasses & special wastes | Household Hazardous Waste (HHW) such as motor oils, solvents, propane tanks, paints (oil and latex), paint stripper, pesticides, glues, etc. | Brick & concrete | Earthen materials including stumps & large trees | Recyclables | Excrement & liquid waste

**ITEMS THAT DO NOT FIT IN PICK-UP**

#### WHEN DO I PLACE MY BULK ITEMS ON THE CURB?

All bulk items must be placed at the curbside/roadside by 7 a.m. on the day bulk collection begins in the area

#### HOW MANY BULK ITEMS CAN BE COLLECTED?

A limit of 500 lbs/226kgs or one pick up load (whichever is less) will be collected from each household.

#### HOW SHOULD ITEMS BE PLACED AT THE CURB?

Metal must be separated from other household items (like furniture) when placed at the curb.

**\*PLEASE NOTE:(a) Metal must be placed in a seperate pile  
(b) 500 lb. maximum per household**